

APPLE-30F-BO-V1A

1. Description:

APPLE-30F-BO-V1A is a simple Apple 30-pin Female Connector breakout board. It brings all 30 pins of an Apple 30-pin Female connector to screw terminal blocks or headers for easy testing, prototyping and breadboard connection. For breadboard connections, user can use the two 15pin headers on both sides of the breakout board for a steady connection.

2. Features:

- All 30 pins of an Apple 30-pin Female Connector brought out to headers and screw terminal blocks
- Various connecting method chosen by users.
- 1.0"(25.4mm)X1.85"(47.0mm) board dimensions

3. Parts:

- 1) 1pc X APPLE-30F-BO-V1A PCB
- 2) 1pc X Apple 30-pin Female Connector
- 3) 2pc X 10pin 0.1"(2.54mm) spacing terminal block
- 4) 2pc X 5pin 0.1"(2.54mm) spacing terminal block
- 5) 1pc X 30pin 0.1"(2.54mm) header

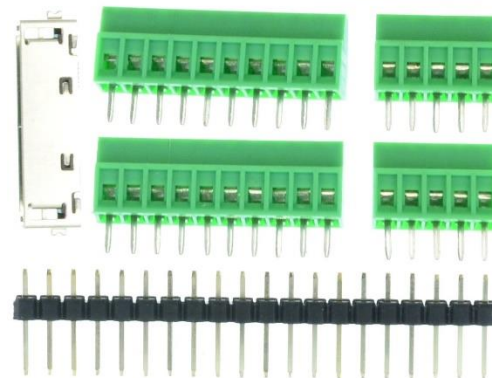
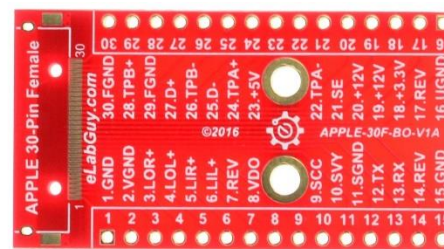
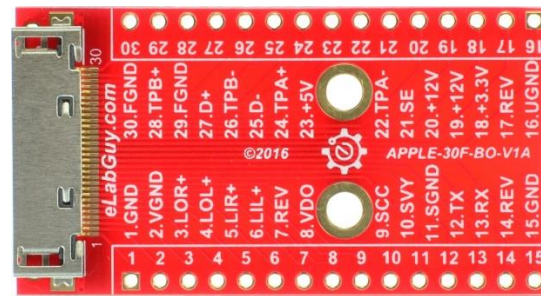


Figure 1: Parts inside the kit
(Note: the module is not assembled, user can decide which connector to use on the module.)

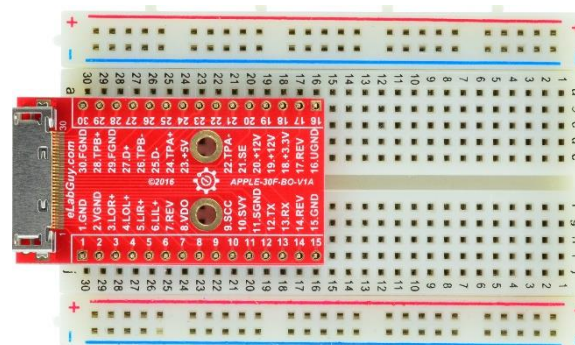


Figure 2: Example of connecting the APPLE-30F-BO-V1A on a breadboard

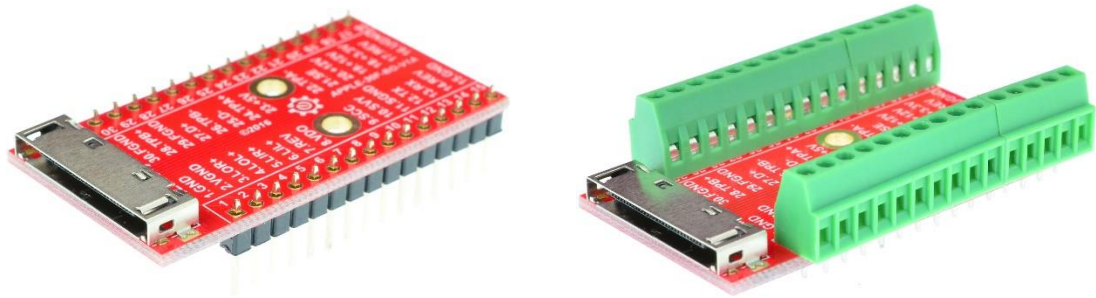
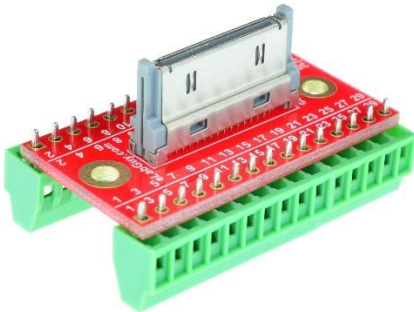
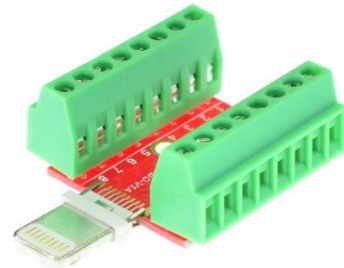


Figure 3: APPLE-30F-BO-V1A Various connections

Related products from eLabGuy:



APPLE-30M-BO-V1AV



APPLE-LM-BO-V1A